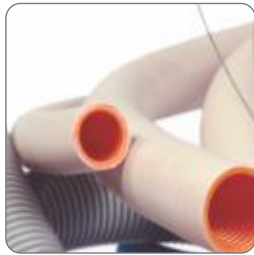
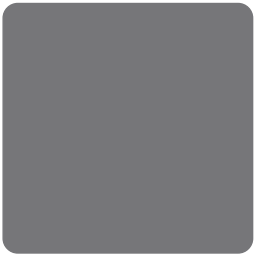
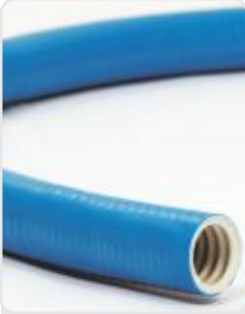


COURBI Driving cables in the concrete



Concrete flexible Conduits
Spiral DIN PLUS


CODE	TYPE	DIMENSIONS		COLOR	U.M.	LENGHT	PACKAGING
		EXT Ø mm	INT Ø mm				
04-21011-011	11	15,6	12,4	BLUE	M	50	50
04-21012-013	13,5	18,3	14,5	BLUE	M	50	50
04-21013-016	16	21	17	BLUE	M	50	50
04-21014-023	23	28	24,4	BLUE	M	25	25
04-21015-029	29	33	29,3	BLUE	M	25	25

GENERAL DESCRIPTION

- Pliable, with special coating.
- Suitable for light and medium mechanical loads > 320N.
- Made of polyvinyl chloride, conduit: (U-PVC), coating: (P-PVC).
- Self extinguishing; flame retardant.

APPLICATIONS

- Indoor residential and industrial installations.
- Encased in concrete, Infloor installations.
- With special galvanized wire internally, for quick and easy installation of cables.
- Available with special coupling for quick and easy connection.
- Fits with: Junction Boxes, SPOT.

PROPERTIES

Resistance to compression - (compression force) at 22 ±2 °C	> 320 N / 5cm	2
Resistance to Impact - (Weight mass / Fall Height) at -15 °C	m:2kg / h:100mm	3
Minimum temperature limit	-15° C	3
Maximum temperature limit	+60° C	1
Dielectric strength	2 kv / 15 min	
Insulation resistance	> 100 MΩ	

CLASSIFICATION

APPLICATION STANDARDS: EN 61386-1/2004, EN 61386-22/2004, DIN 49018 (Dimensions)


SIBI® SUPER


CODE	TYPE	DIMENSIONS		COLOR	U.M.	LENGTH	PACKAGING
		EXT Ø mm	INT Ø mm				
04-21006-011	11	15,6	11,8	WHITE	M	50	50
04-21007-013	13,5	18,3	14,5	WHITE	M	50	50
04-21008-016	16	21	16,6	WHITE	M	50	50
04-21009-023	23	28	23,7	WHITE	M	25	25
04-21010-029	29	33	28,6	WHITE	M	25	25

GENERAL DESCRIPTION

- Pliable, with special coating.
- Suitable for light and medium mechanical loads > 500N.
- Made of polyvinyl chloride, conduit: (U-PVC), coating: (P-PVC).
- Self extinguishing; flame retardant.

APPLICATIONS

- Indoor residential and industrial installations.
- Encased in concrete, Infloor installations.
- Infloor installations.
- Available with special coupling for quick and easy connection.
- Fits with: Junction Boxes, SPOT.

PROPERTIES

Resistance to compression - (compression force) at 22 ±2 °C	> 500 N / 5cm	2
Resistance to Impact - (Weight mass / Fall Height) at -15 °C	m:2kg / h:100mm	3
Minimum temperature limit	-15° C	3
Maximum temperature limit	+60° C	1
Dielectric strength	2 kv / 15 min	
Insulation resistance	> 100 MΩ	

CLASSIFICATION

APPLICATION STANDARDS: EN 61386-1/2004, EN 61386-22/2004, DIN 49018 (Dimensions)


SIBI® Coupling and SIBI® Wire


CODE	TYPE	COLOR	U.M.	PACKAGING (Box)
21-21001-011	11	GRAY	PCS	100
21-21002-135	13,5	GRAY	PCS	100
21-21003-016	16	GRAY	PCS	100
21-21004-023	23	GRAY	PCS	50
21-21005-029	29	GRAY	PCS	50

GENERAL DESCRIPTION

- Special for the connection of flexible conduits.

APPLICATIONS

- Easy connection with SIBI® and SIBI® Wire.

Concrete flexible Conduits

SIBI® Wire



CODE	TYPE	DIMENSIONS		COLOR	U.M.	LENGTH	PACKAGING
		EXT Ø mm	INT Ø mm				
04-21001-011	11	15,6	11,8	BLUE	M	50	50
04-21002-013	13,5	18,3	14,5	BLUE	M	50	50
04-21003-016	16	21	16,6	BLUE	M	50	50
04-21004-023	23	23,75	13,7	BLUE	M	25	25
04-21005-029	29	33	28,6	BLUE	M	25	25

GENERAL DESCRIPTION

- Pliable, with special coating.
- Suitable for light and medium mechanical loads > 500N.
- Made of polyvinyl chloride, conduit: (U-PVC), coating: (P-PVC).
- Self extinguishing; flame retardant.

APPLICATIONS

- Indoor residential and industrial installations.
- Encased in concrete, Infloor installations.
- With special galvanized wire internally, for quick and easy installation of cables.
- Available with special coupling for quick and easy connection.
- Fits with: Junction Boxes, SPOT.

PROPERTIES

Resistance to compression - (compression force) at 22 ±2 °C	> 500 N / 5cm	2
Resistance to Impact - (Weight mass / Fall Height) at -15 °C	m:2kg / h:100mm	3
Minimum temperature limit	- 15° C	3
Maximum temperature limit	+60° C	1
Dielectric strength	2 kv / 15 min	
Insulation resistance	> 100 MΩ	

CLASSIFICATION

APPLICATION STANDARDS: EN 61386-1/2004, EN 61386-22/2004, DIN 49018 (Dimensions)



TUBODIN Medium Type 750N



CODE	TYPE	DIMENSIONS		COLOR	U.M.	LENGTH	PACKAGING
		EXT Ø mm	INT Ø mm				
03-21001-011	11	16	11,8	GRAY	M	50	50
03-21002-135	13,5	18,7	14,5	GRAY	M	50	50
03-21003-016	16	21,2	16,4	GRAY	M	50	50
03-21004-023	23	28,3	23,2	GRAY	M	25	25
03-21005-029	29	34,8	28,5	GRAY	M	25	25

GENERAL DESCRIPTION

- Corrugated (spiral), pliable.
- Made of polyvinyl chloride – (U-PVC).
- Self extinguishing; flame retardant.
- UV protection.

APPLICATIONS

- Indoor or outdoor residential and industrial installations
- Cable routing through masonry – Flush installations
- Encased in concrete
- Infloor installations
- Fits with: COMBO Rigid L/T, Junction Boxes, Switch Boxes, SPOT, Plasterboard Boxes.

PROPERTIES

Resistance to compression - (compression force) at 22 ±2 °C	> 750 N / 5cm	3
Resistance to Impact - (Weight mass / Fall Height) at -15 °C	m:2kg / h:100mm	3
Minimum temperature limit	-15° C	3
Maximum temperature limit	+60° C	1
Dielectric strength	2 kv / 15 min	
Insulation resistance	> 100 MΩ	

CLASSIFICATION

APPLICATION STANDARDS: EN 61386-1/2004, EN 61386-22/2004, DIN 49018 (Dimensions)



TUBODIN® Coupling



CODE	TYPE	COLOR	U.M.	PACKAGING (Box)
21-21010-011	11	GRAY	PCS	1
21-21011-135	13,5	GRAY	PCS	1
21-21012-016	16	GRAY	PCS	1
21-21013-023	23	GRAY	PCS	1
21-21014-029	29	GRAY	PCS	1

GENERAL DESCRIPTION

- Special for the connection of flexible conduits.

APPLICATIONS

- Easy connection with Tubodin®.

Special flexible Conduits
EL Flex


CODE	TYPE	DIMENSIONS		COLOR	U.M.	LENGTH	PACKAGING
		EXT Ø mm	INT Ø mm				
05-21001-023	23	32	24	ORANGE	M	50	50
05-21002-029	29	40	30,8	ORANGE	M	50	50
05-21003-048	48	57,5	48	ORANGE	M	25	25

GENERAL DESCRIPTION

- Semi-flexible, corrugated (spiral).
- Made of special polymer material.

APPLICATIONS

- Underground networks, lighting supply lines to roads, squares, sidewalks.
- Encased in concrete.
- Infloor installations.
- Resistant to acids and solvents.

PROPERTIES

Resistance to compression - (compression force) at 22 ±2 °C
 Resistance to Impact - (Weight mass / Fall Height) at -15 °C
 Minimum temperature limit
 Maximum temperature limit
 Dielectric strength
 Insulation resistance

> 450 N / 5cm
 m:3kg / h:100mm
 - 25° C
 +105° C
 2 kv / 15 min
 > 100 MΩ

CLASSIFICATION

L
 D
 U
 T
 Y



APPLICATION STANDARDS: EN 50086-1, EN 50086-2-4

Spotlight Installation Box


CODE	TYPE	DIMENSIONS mm	COLOR	U.M.	PACKAGING (Bag)
29-21001-050	R.50	Ø 110x50	BLACK	PCS	30
29-21002-063	R.63-80	Ø 130x95	BLACK	PCS	20

GENERAL DESCRIPTION

- Non-corrosive. Resistant to impact and pressure.
- Made of special polymer material.

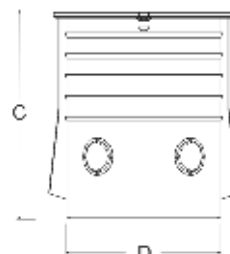
APPLICATIONS

- Indoor residential and industrial installations.
- Encased in concrete.
- Recess for the installation of ceiling spotlights R.50 – R.63/80.
- Special design of lateral partitions for easy cutting and conduits installation.
- Fits with: SiBi®, DOMO Spiral M/T, Betosol®.

PROPERTIES

Protection rating against solid bodies and water:
 Glow wire test:
 Minimum temperature limit:
 Maximum temperature limit:

IP 20
 650°C
 - 15°C
 +60°C



APPLICATION STANDARDS: IEC 60670 - 1/2002